



CHILD IN A DIGITAL WORLD

International Psychological Forum

1-2 JUNE 2022

“The priority of gender approach in the socialization of boys and girls in the digitalization context”

ELENA IOFFE

**PhD in Psychology, Associate Professor of the Department of Human
Psychology at Herzen University,**

St. Petersburg

STEM - дисциплины



Science
(наука)

Technology
(технологии)

Engineering
(инженерия)

Math
(математика)

Gender component of pedagogical culture at school

By "gender dimension in education" we mean an assessment of the consequences and results of the impact of educational efforts of teachers on the position and development of boys and girls, their awareness of their identity, their choice of ideals and life goals, the status of children in the school team, peer group, depending on the biological sex.

Shtyleva L.V. Pochemu uchitelyu XXI veka neobkhodimo znat' pro «gender» i obladat' gendernym izmereniyem v rabote s detmi?//Vnedreniye gendernykh kursov v sistemu srednego obrazovaniya: Metod.posobiye. – Ivanovo. 2000.

The gender-role approach

Education of a personality focused on compliance with the normative model of masculinity or femininity, *focus on complementarity of the sexes*



The gender-neutral approach

Exclusion of differentiated education by leveling the importance of the gender factor, *focus on the expansion of life experience, not limited to gender division*



The gender approach

Development of individuality and capabilities of everyone, regardless of gender, *training in partnership between sexes*

The purpose of gender approach in education -

to overcome those stereotypes that interfere the successful development of a child's personality, to focus on dependence of childrens' of different sexes behavior more to their personal aptitudes, and not to patriarchal (conservative) ideas of educators about the norms of masculinity and femininity.

The problem of gender imbalance in the STEM



Ada Lovelace and the first computer algorithm

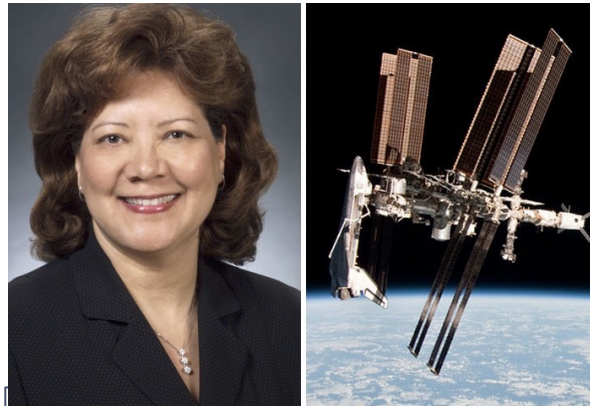
If girls had as many role models of female inventors as boys have male inventors, the gender gap in innovation could be halved.



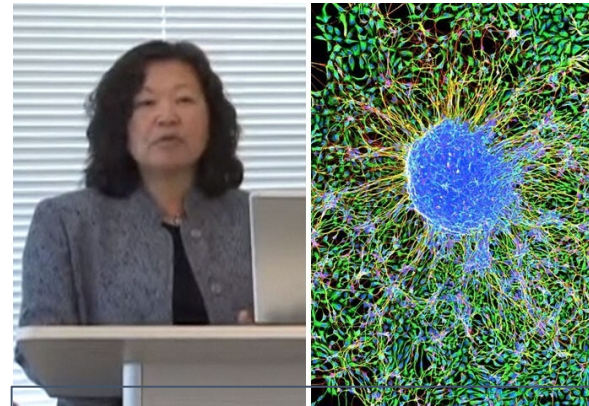
Hedy Lamarr and wireless data transmission



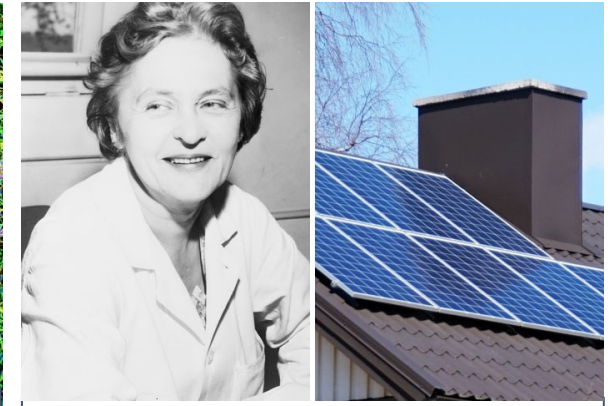
Zinaida Ermolaeva - microbiology, epidemiology.



Olga Gonzalez-Sanabria and batteries for the ISS



Ann Tsukamoto - Stem Cell Isolation



Maria Telkes and home solar panels

The gender approach in education is based on the following principles:

Rejection of sex-differentiated educational influences;

Neutralization and mitigation of socially determined differences between female and male persons;

Absence of orientation on the "special purpose" and recognition of the interchangeability of female and male social roles;

Implementation of the ideas of gender equality;

Ensuring freedom of choice for each child, encouraging his individual interests and preferences.

Physicist and mathematician Katherine Johnson from the series of Barbie dolls "Inspiring women"





**THANK YOU FOR
YOUR
ATTENTION!**